

SCHEME

of shelling of Maryinka settlement's residential area by RaF on 20.05.2021



47°57'02,14"N
37°30'40,59"E



Mine Trudivska

RaF

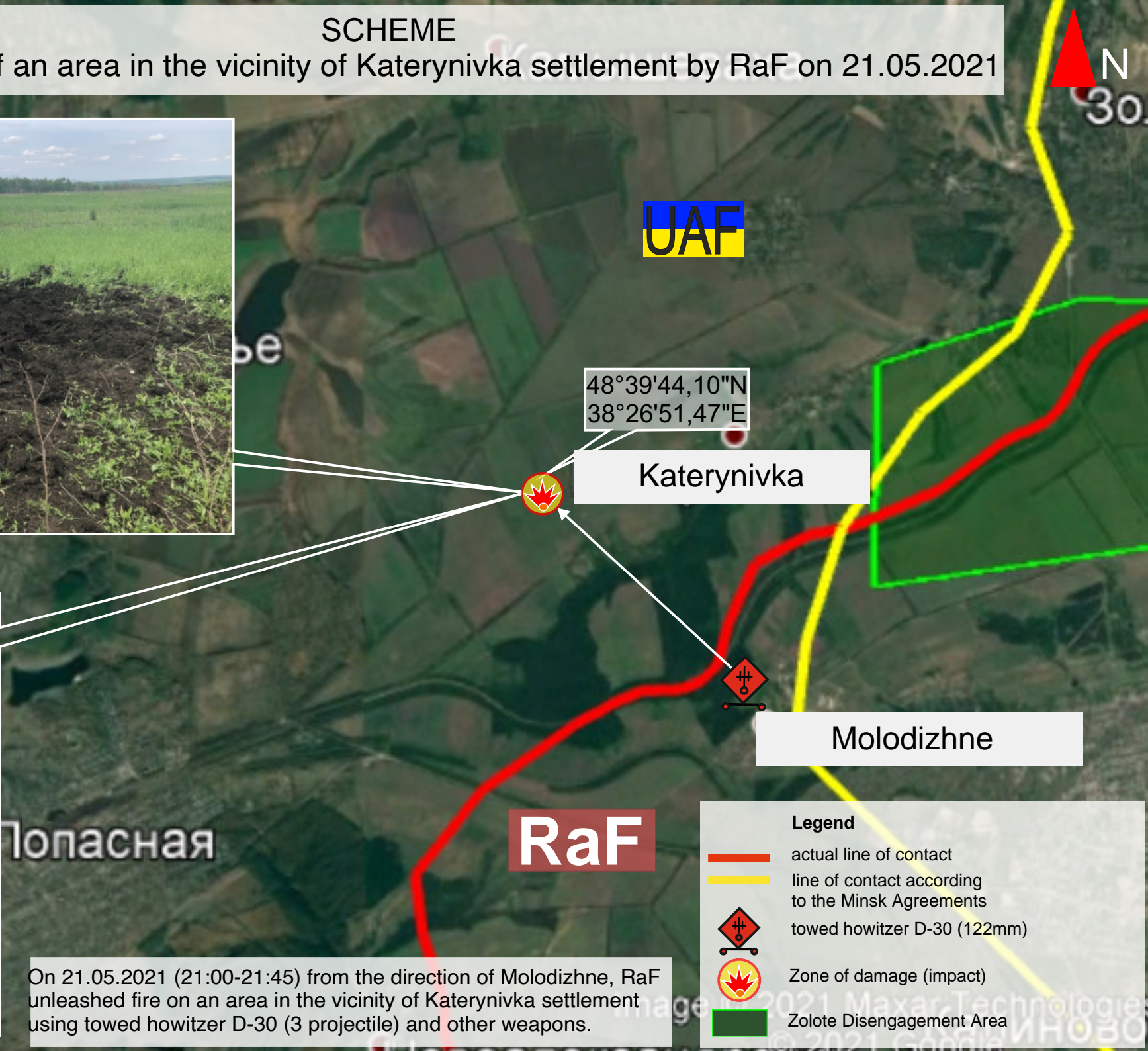
Maryinka

Legend

- actual line of contact
- line of contact according to the Minsk Agreements
- SPG-9
- Zone of damage (impact)

On 20.05.2021 (17:04-17:12) from the direction of Mine Trudivska, RaF unleashed fire against the residential sector of the settlement of Maryinka using 73-mm grenade launcher SPG-9 (6 projectiles).

SCHEME of shelling of an area in the vicinity of Katerynivka settlement by RaF on 21.05.2021



48°39'44,10"N
38°26'51,47"E

Katerynivka

Molodizhne

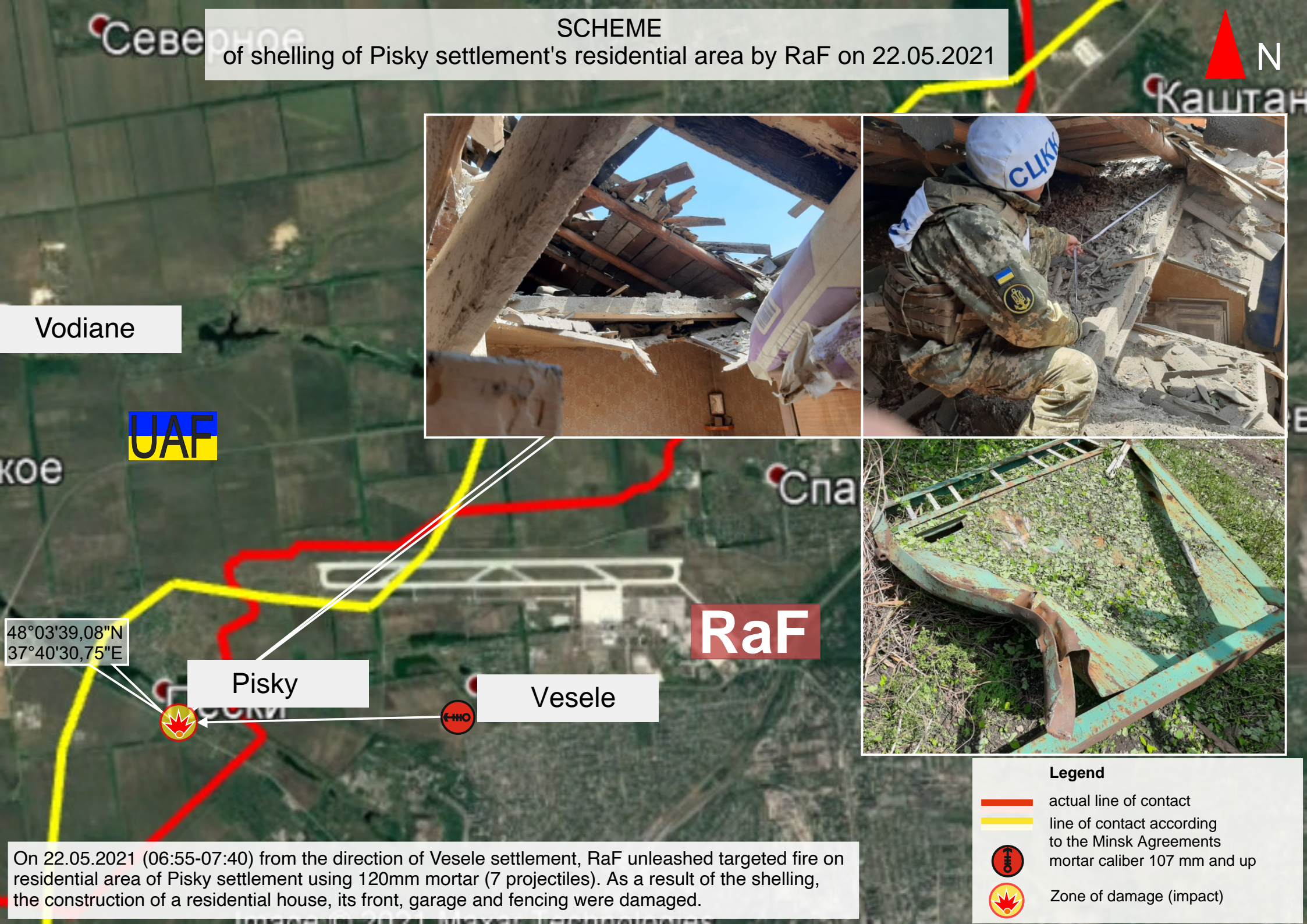
RaF

Legend

- actual line of contact
- line of contact according to the Minsk Agreements
- towed howitzer D-30 (122mm)
- Zone of damage (impact)
- Zolote Disengagement Area

On 21.05.2021 (21:00-21:45) from the direction of Molodizhne, RaF unleashed fire on an area in the vicinity of Katerynivka settlement using towed howitzer D-30 (3 projectile) and other weapons.

SCHEME
of shelling of Pisky settlement's residential area by RaF on 22.05.2021



Vodiane



RaF


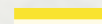


Pisky

Vesele

48°03'39,08"N
37°40'30,75"E



Legend

-  actual line of contact
-  line of contact according to the Minsk Agreements
-  mortar caliber 107 mm and up
-  Zone of damage (impact)

On 22.05.2021 (06:55-07:40) from the direction of Vesele settlement, RaF unleashed targeted fire on residential area of Pisky settlement using 120mm mortar (7 projectiles). As a result of the shelling, the construction of a residential house, its front, garage and fencing were damaged.