

# Scheme of shelling of AFU positions on 31.01.2021



Ласточкино

Avdiivka

Крутая Балка



ое

ЯСИНОВА

Kashtanove

48°06'52,24"N  
37°45'05,80"E



On January 31, 2021, a photo-fixation of the shelling of the UAF positions by a 122-mm light portable rocket system Grad-P was carried out by the RaF



48°06'02,07"N  
37°50'28,19"E

**RaF**

Spartak

Яковлевка

### Legend

- actual line of contact
- line of contact according to the Minsk
- direction of shelling
- shell burst





# Scheme of Disengagement Area # 2 (Zolote)



48°39'27,34"N  
38°29'22,33"E



48°39'30,93"N  
38°29'36,52"E

48°40'12"N  
38°33'13"E



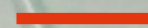
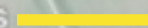
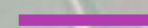
47°39'27,50"N  
38°31'00,53"E

**RaF**



48°39'21,53"N  
38°29'21,19"E

## Legend

-  actual line of contact
-  line of contact according to the Minsk Agreements
-  line according to the Decree of the President of Ukraine dated 07.02 2019 № 32/2019

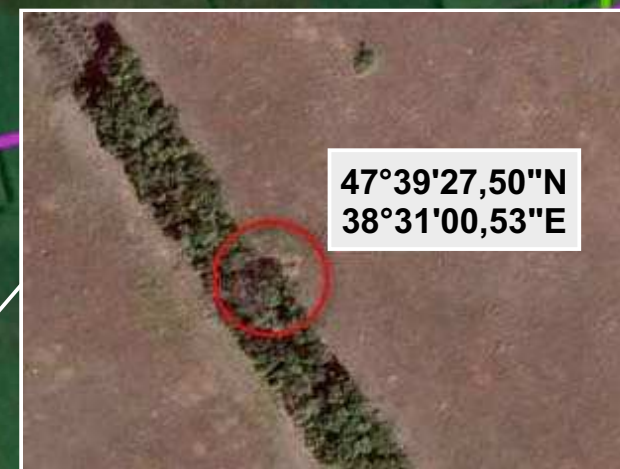
Катериновка

axar Technologies  
Google

Google



# Scheme of Disengagement Area # 2 (Zolote)

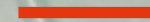
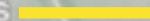
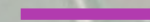


48°40'12\"N  
38°33'13\"E

Катериновка

RaF

## Legend

-  actual line of contact
-  line of contact according to the Minsk Agreements
-  line according to the Decree of the President of Ukraine dated 07.02 2019 № 32/2019

axar Technologies  
Google

Google



# Scheme of engineering works on 12.01.2021

UAF

Zolote



12.01.2021 07:53  
48°40'57,70"N  
30°33'33,21"E

RaF



**Legend**

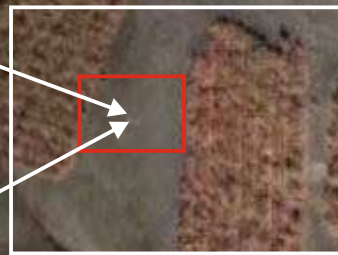
- actual line of contact
- line of contact according to the Minsk



Scheme  
of engineering works on 12.01.2021

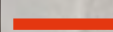


**RaF**



Maxar Technologies

**Legend**

 actual line of contact

Google

Zolote



# Scheme of engineering works on 12.01.2021

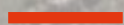
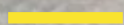
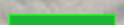


1.2 KM

**RaF**

Image © 2020 Maxar Technologies

**Legend**

-  actual line of contact
-  line of contact according to the Minsk
-  Disengagement Area #2 (Zolote)

Scheme  
of engineering works on 17.01.2021



**RaF**

Disengagement Area №3  
(Petrivske)

Viktorivka

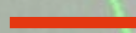
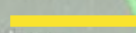
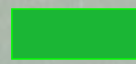
47°37'59.12"N  
37°49'08.46"E



Petrivske

**RaF**

**Legend**

-  actual line of contact
-  line of contact according to the Minsk
-  Disengagement Area #3 (Petrivske)

Scheme of engineering works on 17.01.2021



UAF  
UAF

RaF

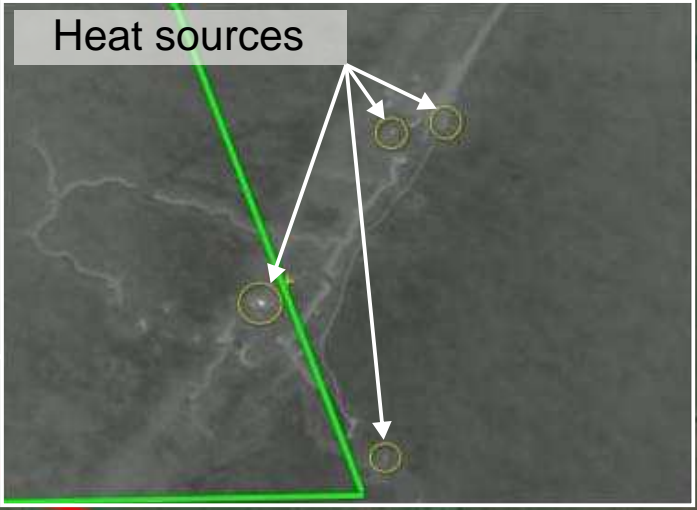
Viktorivka



Bohdanivka

Петровское

47°36'59.43"N  
37°49'59.95"E



**Legend**


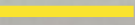

-  actual line of contact
-  line of contact according to the Minsk
-  Disengagement Area #3 (Petrivske)

Image © 2021 Maxar Technologies  
Image © 2021 CNES / Airbus  
© 2020 Google

Google

Scheme  
of engineering works on 12.01.2021



12.01.2021 09:13  
48°41'12,31"N  
38°35'54,68"E



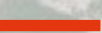
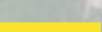
RaF



1 KM

Holubivske

Legend

-  actual line of contact
-  line of contact according to the Minsk



Scheme  
of engineering works on 14.01.2021



14.01.2021 08:15  
48°41'54,74"N  
38°36'36,33"E



**RaF**

**Legend**

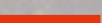
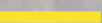
-  actual line of contact
-  line of contact according to the Minsk

Image © 2020 Maxar Technologies

Holubivske

Scheme  
of engineering works on 14.01.2021



Orihove

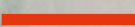


48°41'55.10"N  
38°36'42.27"E

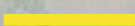
280M

Image © 2021 Maxar Technologies  
© 2020 Google

**Legend**



actual line of contact



line of contact according to the Minsk

Scheme  
of engineering works on 22.01.2021



**RaF**

Image © 2020 Maxar Technologies

**Legend**

- actual line of contact
- line of contact according to the Minsk

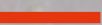

Holubivske



**RaF**

Image © 2020 Maxar Technologies

**Legend**

-  actual line of contact
-  line of contact according to the Minsk

Holubivske



**RaF**

Image © 2020 Maxar Technologies

**Legend**

- actual line of contact
- line of contact according to the Minsk



Horikhove

Novotoshkivske

48°42'18,95"N  
38°37'16,96"E



RaF

Holubivske

Березовское

**Legend**

- actual line of contact
- line of contact according to the Minsk

Scheme of engineering works on 30.01.2021



UAF

Horikhove

Novotoshkivske

48°41'55,67"N  
38°36'42,80"E

Donetskyi


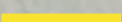
RaF

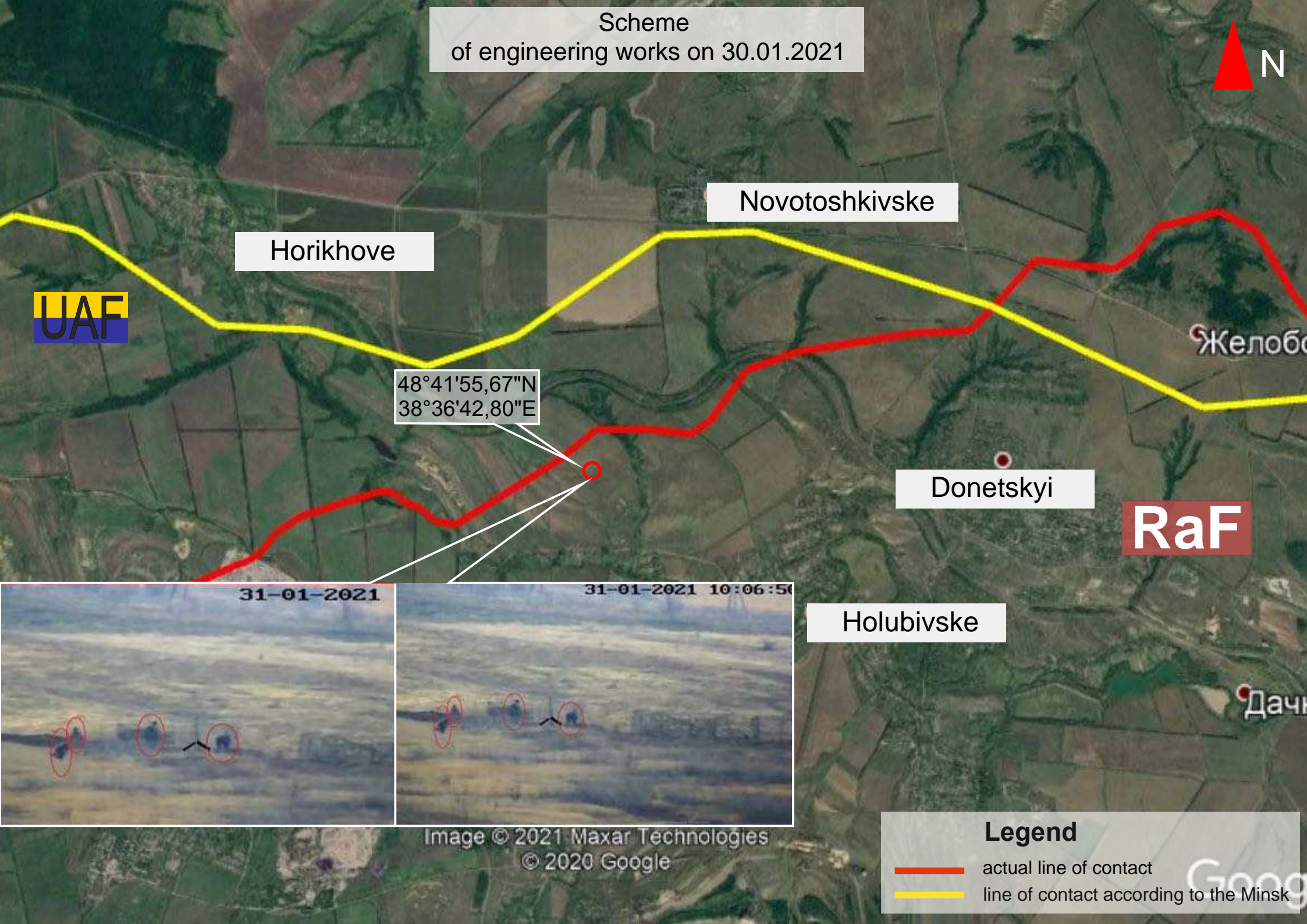
Holubivske



Image © 2021 Maxar Technologies  
© 2020 Google

**Legend**

-  actual line of contact
-  line of contact according to the Minsk





**RaF**

Spartak

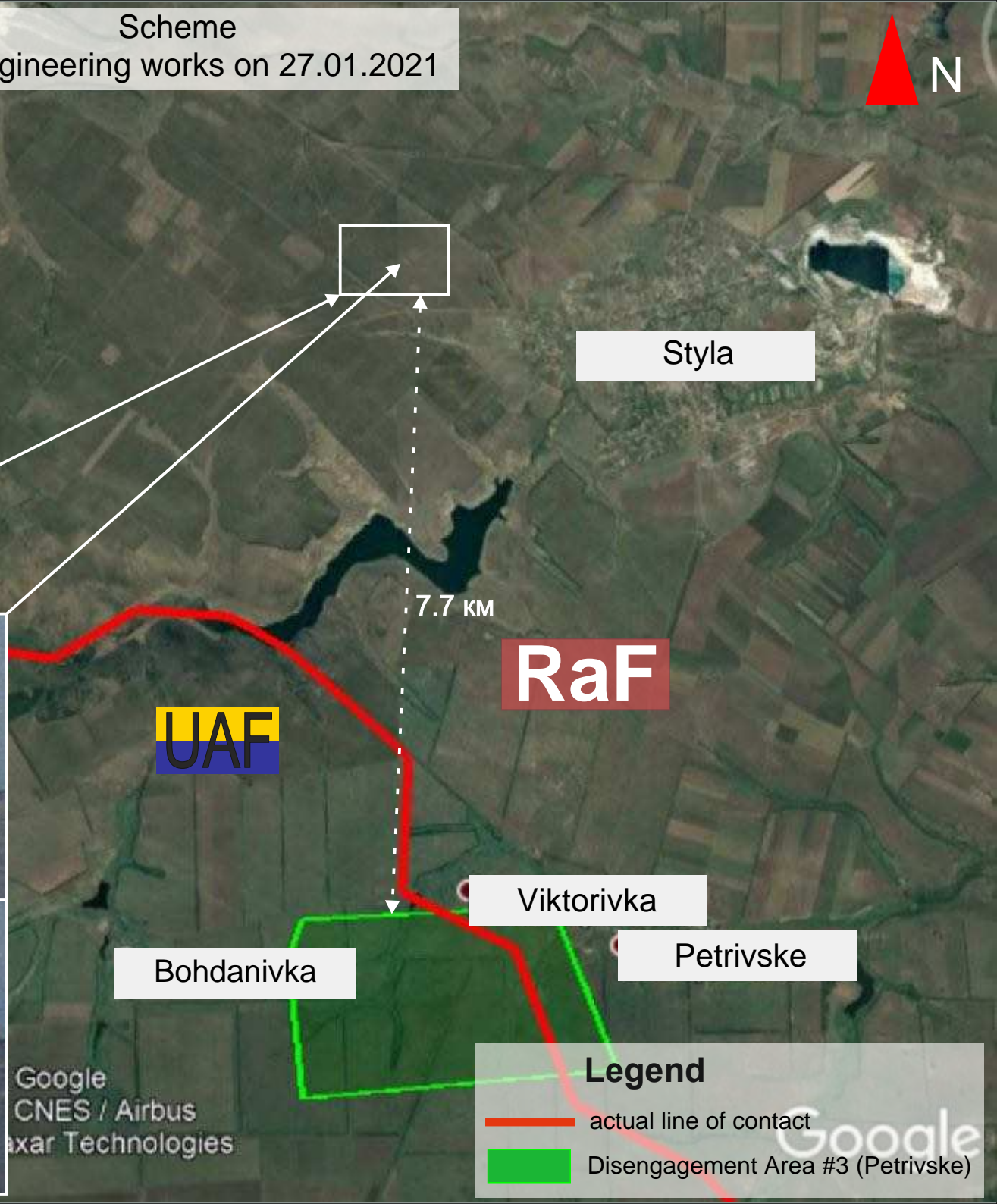


Vesele

**Legend**

- actual line of contact
- line of contact according to the Minsk

Scheme of engineering works on 27.01.2021



Styla

RaF

UAF

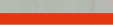

7.7 KM

Viktorivka

Bohdanivka

Petrivske

**Legend**

-  actual line of contact
-  Disengagement Area #3 (Petrivske)

Google  
CNES / Airbus  
Maxar Technologies

Google

Scheme  
of engineering works on 31.01.2021



UAF

Opytne

Spartak

RaF

Vesele

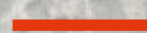
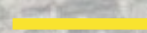
48°04'45,41"N  
37°42'45,57"E

48°04'21,69"N  
37°43'16,83"E



Image © 2021 Maxar Technologies  
© 2020 Google

**Legend**

-  actual line of contact
-  line of contact according to the Minsk