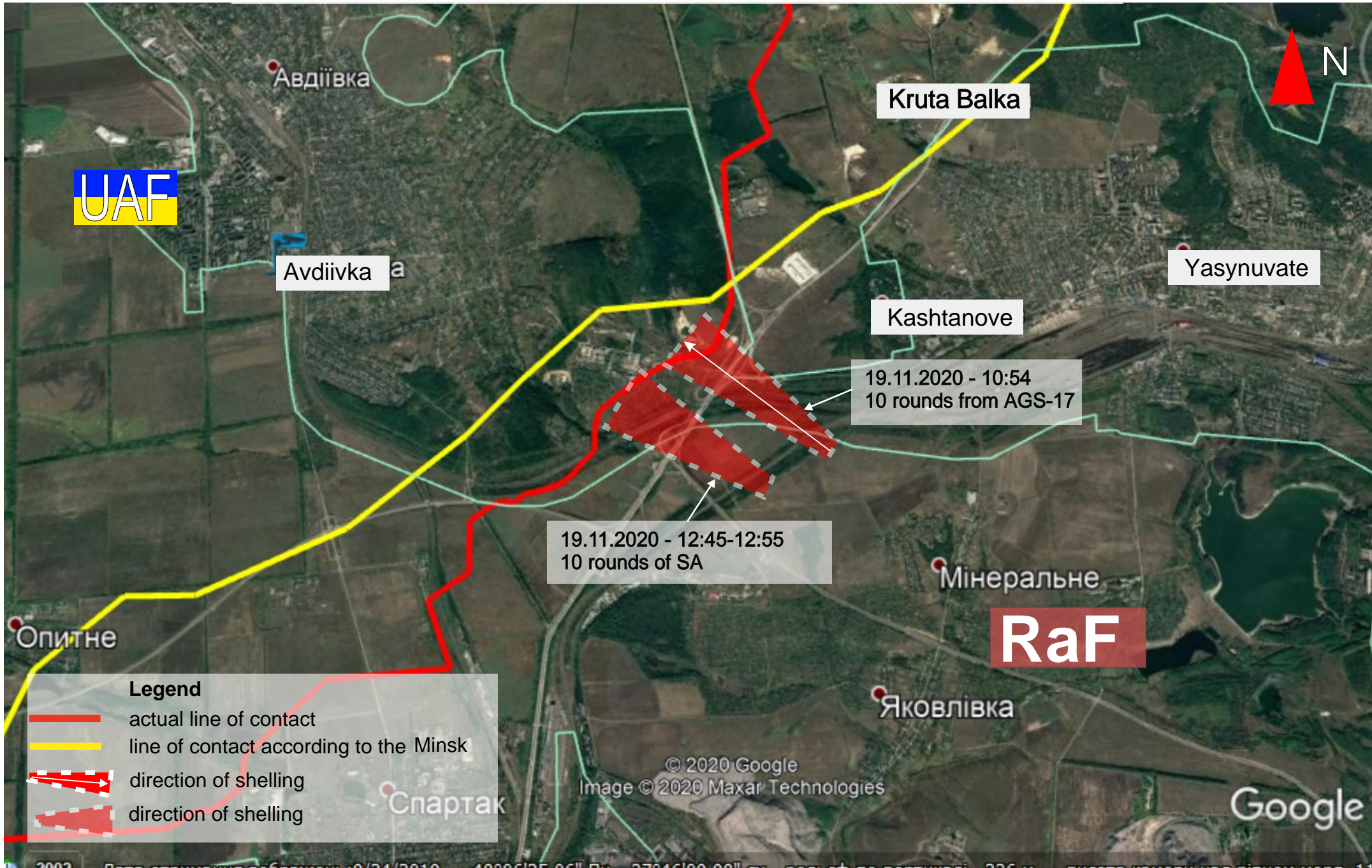


SCHEME of shelling near Avdiivka on 11.11.2020



RaF - armed formations of the Russian Federation

SCHEME

according to the OSCE SMM report of 21.11.2020



Дзержинське

Водяне

The OSCE camera Shyrokyne recorded:
20.11.2020 (03:26) - 1 explosion

The OSCE camera Shyrokyne recorded:
20.11.2020 (04:43, 05:25) - 2 explosions



Lebedynske

Sakhanka

RaF

5 km

5 km

Shyrokyne

SMM camera
"Shyrokyne"

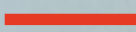


Широкине

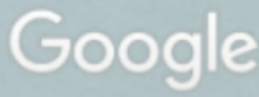
Піонерське

Сопине

Бердянське

Legend

-  actual line of contact
-  line of contact according to the Minsk
-  explosion





Contact Line

Unmanned aerial vehicles in boxes

1 ground control station for unmanned aerial vehicles (Navodchik-2)



1 ground control station for unmanned aerial vehicles (Navodchik-2)
Less than 12km from the contact line

near Luhansk city | non-government-controlled
Luhansk region
8 November 2020
Mini UAV Imagery

SCHEME

of location Russian EW system Navodchik-2



Металіст

Жовтневий район

Mykolaivka

Luhansk

RaF

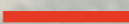

12 km

Khryashchuvate



On November 8, at the airport near Luhansk (temporarily occupied) mini-UAV of SMM recorded an EWS (RB-341V Leer-3) as well as 3 boxes (estimated to have been used to store and transport UAVs). According to the Mission's updated information, the unit of equipment, the RB-341B Leer-3 EWS, was the ground control station of the UAV (Navodchik-2).

Legend

-  actual line of contact
-  line of contact according to the Minsk

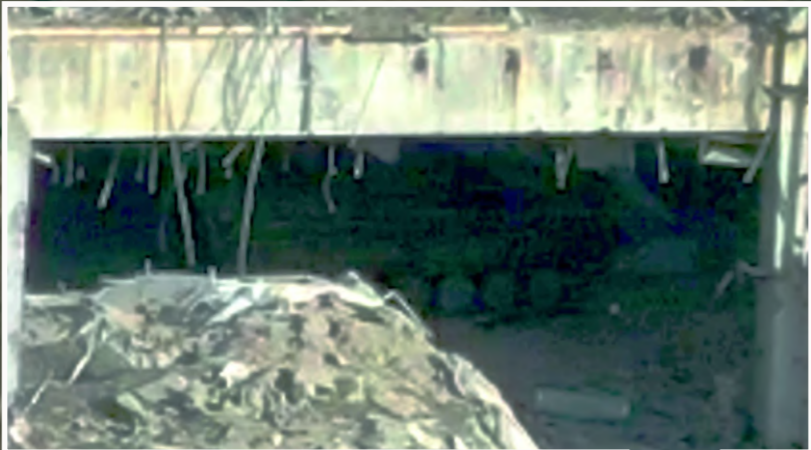
SCHEME
of location of the tank



UAF

Vodiane

Opytne



Спартак
СТВОЛ

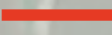
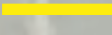

48°04'07,6028"
37°44'36,1567"

Pisky



RaF

Legend

-  actual line of contact
-  line of contact according to the Minsk
-  location of the tank

Google