

SCHEME

of conducting of engineering works by armed formations of the Russian Federation (RaF)



UAF

● Avdiivka

Active efforts to re-establish existing positions throughout the site along the line of contact



RaF



Engineering explosions
03.11.2020
11:23-11:40 - 3 explosions

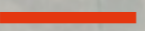
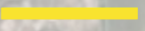

04.11.2020
07: 59.10: 06 - 4 explosions



DEPO

Image © 2020 Maxar Technologies

Legend

-  actual line of contact
-  line of contact according to the Minsk
-  explosion

Google

SCHEME

of conducting of engineering works by RaF



Active efforts to re-establish existing positions throughout the site along the line of contact

● Novotoshkivske



48°42'54"N
38°40'17"E

● Donetsk

RaF



Legend

- actual line of contact
- line of contact according to the Minsk

Image © 2020 Maxar Technologies

Google

SCHEME

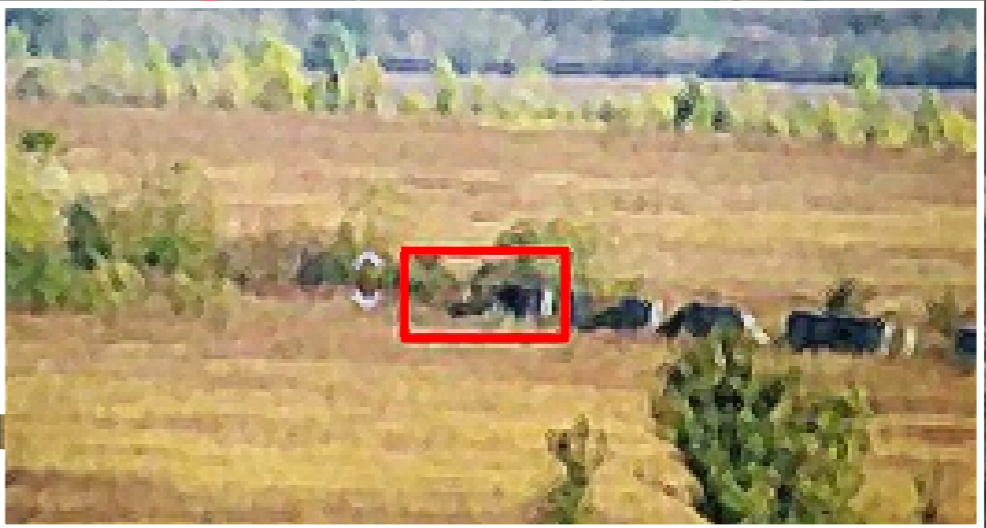
of conducting of engineering works by RaF



Active efforts to re-establish existing positions throughout the site along the line of contact



48°04'40"N
37°43'46"E



48°04'24"N
37°41'37"E



RaF

● Donetsk

- Legend**
- actual line of contact
 - line of contact according to the Minsk

Google

SCHEME

of conducting of engineering works by RaF



UAF

● Shumy

48°22'35"N
37°56'59"E

Equipment of new trenches and firing positions



RaF

Legend



-  actual line of contact
-  line of contact according to the Minsk

Image © 2020 Maxar Technologies

Google

SCHEME

according to letter of RaF No.1130 dated 08.11.2020



UAF

● Runway of Donetsk Airport

● Pisky

RaF

26.10.2020
48°04'22,656"N*
37°41'35,405"E

07.11.2020
48°04'22,898"N
37°41'45,692"E

31.10.2020
48°04'22,033"N
37°41'35,795"E

29.10.2020
48°04'09,060"N
37°41'41,925"E

Legend

- actual line of contact
- line of contact according to the Minsk

*Coordinates in the letter of RaF :
47°04'22,656"N 37°41'35,405"E

